

NCI Designation Overview

Steve Price, MBA – Associate Director for Administration, CCC
Executive Director for Cancer Research Administration,
UC Academic Health Center

Tammy Mentzel, MPH – Assistant Director for Programs and Projects, CCC



Bob the Builder....and Wendy too!



**Can we
build it?**

**Yes we
can!**

Learning Objectives

- Overview of NCI Designation
- Misconceptions regarding NCI Designation
- Opportunities to help move UC towards NCI-designation of its cancer research enterprise

HISTORY OF NCI-DESIGNATED CANCER CENTERS

President Nixon signed the landmark National Cancer Act in 1971 formally establishing the NCI-designation cancer centers program and funding the first 15 Centers



Nixon Signs \$1.6 Billion Cancer Bill, Names Man to Head Fight

WASHINGTON (UPI)—President Nixon today signed into law a \$1.6 billion program to fund a search for the act was "a milestone in the long and difficult effort toward the cure and cures of cancer." "This law is

WHAT IS NCI-DESIGNATION?

- NCI designation is an accreditation given to elite US medical institutions demonstrating they are leaders in addressing the nation's cancer burden through **research**.
- NCI-designated cancer centers receive research infrastructure funding (grant) ranging from \$1.4M-\$6M/year plus institutional overhead costs.
- A/K/A Cancer Center Support Grant (CCSG P30) – Peer-Reviewed by teams of 21 MDs, Scientists, Administrators, etc. from other NCI centers



NCI RECOGNIZES THREE TYPES OF CANCER CENTERS

Basic, Clinical, and Comprehensive



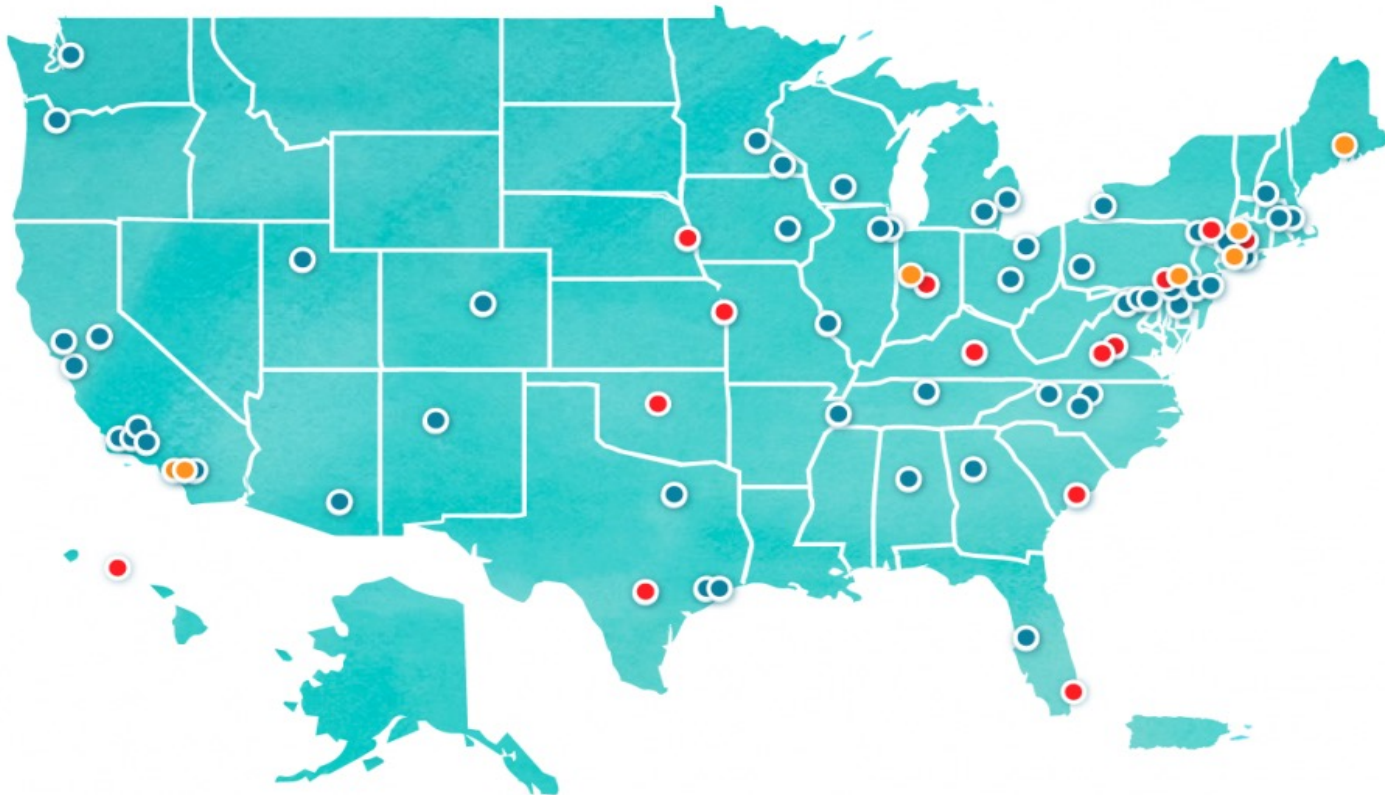
A Cancer Center Designated by the National Cancer Institute



A Cancer Center Designated by the National Cancer Institute



71 NCI Designated 7 Basic, 13 Clinical, 51 Comprehensive



● CANCER CENTER

● COMPREHENSIVE CANCER CENTER

● BASIC LABORATORY

FEATURES OF AN NCI CANCER CENTER

High-impact research discoveries across science spectrum and lifecycle

Collaborative research across disciplines; discoveries along pipeline

Innovative clinical trials

Leading-edge multidisciplinary care

Leadership in cancer research education and training the next generation

High impact on catchment through research and outreach

Essential Scientific Programs (Minimums)

Basic Science Program	Clinical Research Program	Cancer Prevention, Control and Population Sciences
At least 7 R01 equivalent projects	At least 7 R01 equivalent projects	At least 7 R01 equivalent projects
5 different PIs / Investigators	5 different PIs / Investigators	5 different PIs / Investigators
Quality of science measured through publications in high impact journals	Quality of science measured through publications in high impact journals	Quality of science measured through publications in high impact journals

SIX ESSENTIAL CHARACTERISTICS OF NCI-DESIGNATED CENTERS

1. Physical Space – dedicated, cancer-focused; shared resources & admin.
2. Organizational Capabilities
3. Transdisciplinary Collaboration and Coordination
4. Cancer Focus
5. Institutional Commitment
6. Center Director

BUILDING BLOCKS OF SUCCESS

Institutional Commitment	Translational, Transdisciplinary and Collaborative Research	Novel Shared Resources
Leadership and Organization	Membership Engagement	Catchment-Relevant Science
Programmatic Research Productivity	Clinical Trials Activity and Impact	Planning and Evaluation

Tangible Benefits of NCI Designation

- **Facilitates recruitment of outstanding, world class physicians, scientists, clinicians, and students**
- **Fuels partnerships with pharma/biotech companies**
- **10% (at least) growth in patient volume in first year and greatly enhances clinical marketing/branding ability (all but 3 hospitals listed on top Cancer Hospitals in US New & World Report are NCI-designated)**

Tangible Benefits of NCI Designation

- **Research infrastructure costs are supported through the CCSG which generally are not supported via other NCI grant mechanisms**
- **Additional grants available only to NCI-designated Cancer Centers (NCI, DOD, V Foundation, Pew)**
- **NCI-designated centers report 4-fold increases in philanthropic support during first 5-10 yrs. and continue to attract the largest philanthropic donations**

Benefit of NCI designation...

for the **patient**



URBAN IMPACT

INNOVATION AGENDA

- Advancements in care
- Lower mortality
- Close to home
- Access to cutting-edge clinical trials
- Expand cancer prevention
- Clinical trials relevant to our catchment area

Benefits of NCI designation for the.... **community**



URBAN IMPACT

INNOVATION AGENDA

- Catchment focused research and community engagement
- Requires addressing health disparities in geographical catchment area
- Jobs
- Biotechnology
- Improved research infrastructure
- Attract world class researchers & clinicians
- More research funding
- Increased tax revenues

CCC Governing Board Composition

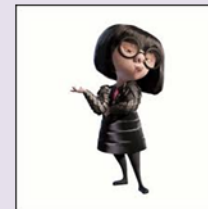
- **Neville Pinto, PhD (Permanent GB Chair)** – President, University of Cincinnati
- **Rick Lofgren, MD** – President & CEO, UC Health
- **Andrew Filak, MD** – Interim Dean & Sr. VP of Health Affairs, University of Cincinnati COM
- **Michael Fisher** – President & CEO, Cincinnati Children's Hospital
- **Peggy Hofstetter, MD** – UCCOM Chair of Pediatrics

FRIENDS & RESOURCES - HURON



Beverly Ginsburg Cooper, Team Lead, Cancer Services

- Senior Vice President for Research, Dana-Farber Cancer Institute
- Administrator, Dana-Farber/Harvard Cancer Center consortium
- Executive Director, University of Pennsylvania Abramson Cancer Center
- COO, Cancer Services, University of Pennsylvania Health System
- COO and VP, teaching and community hospitals
- NCI reviewer
- Member, multiple EABs



Ellen McLaughlin, Director

- Director, Research Administration, Georgetown-Lombardi Comprehensive Cancer Center
- Gynecologic oncology nursing background
- National speaker, cancer center research administration



CCC ADMINISTRATIVE CORE

- **Goal:** Build a strong cancer center research administrative and coordinating infrastructure that will effectively foster member engagement and support research leaders and the strategies and goals of the CCC Governing Board, **utilizing best research administrative practices** such as the NCI CCSG P30 requirements/guidelines.
- **By-Product:** A fully NCI CCSG-compliant and effective administrative core which will receive an Excellent/Outstanding/Exceptional review score by site reviews.
- It's all about promoting the **Quality of the Science** as measured through Publications and Peer-Reviewed, Cancer-Relevant Funding.

Status Update

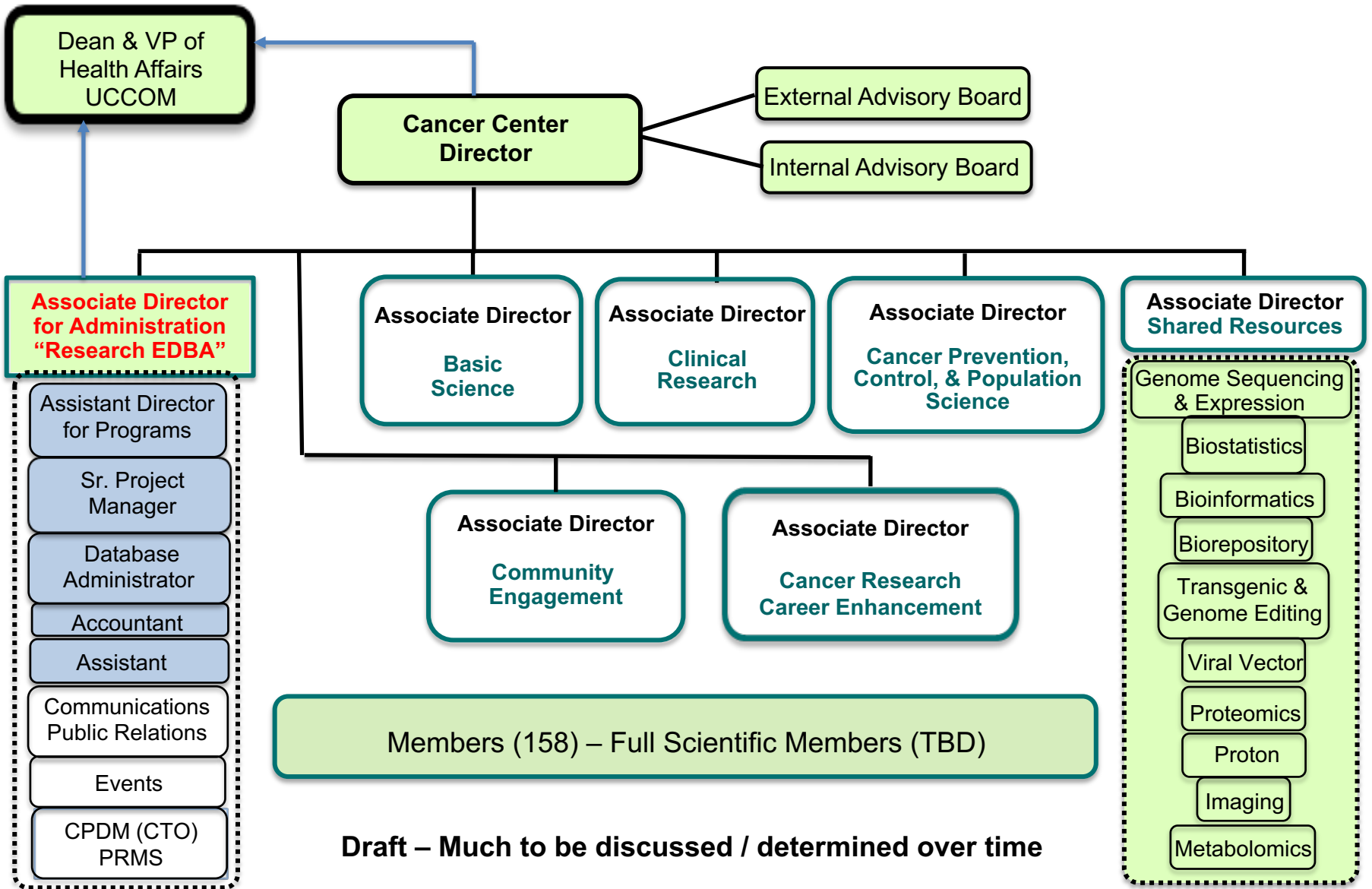
- Focus – Buildout of an NCI-compliant Administrative Core
- Phase I Hiring:
 - Sherrell Hines – 09/18 Assistant
 - Tammy Mentzel – 02/19 Asst. Director for Programs & Projects (from CO Nursing)
 - Kelly McDonald – 05/19 Accountant/Financial Mgr. (from COM Office of Fin & Ops)
 - Sharon Sauter – 06/19 CCSG Senior Project Manager (from CCHMC)
 - **Christina Schwierling – 08/19 Data Base Administrator (in COM IT)**
- Center Director and NCI-compliant faculty leadership structure -- TBD
- Key focus on data/analytics for dashboards and data tables and building staff infrastructure
- Pathway to NCI-Designation (consortium oriented? vs UC faculty oriented?)

ADMIN CORE AREAS OF RESPONSIBILITY

- **Catchment**
- Communications
- **Data Analytics**
- **Financial and Administrative Operations**
- Major initiatives
- Membership (faculty members)
- NCI Liaison to Office of Cancer Centers
- Oversight of all CCSG Activities

ADMIN CORE AREAS OF RESPONSIBILITY

- **Philanthropy**
- Pilot Funds
- Planning and Evaluation
- **Recruitment (investigators, MD scientists, etc.)**
- Reporting (all NCI required reports and monitoring of impact)
- Shared Resources
- Space and Facilities (research focused)
- Strategic Planning
- Training and Education



Target NCI Base Funding Levels (Direct Costs)

Basic Science Program	Clinical Research Program	Cancer Prevention, Control and Population Sciences
\$2.2 - \$3.0 mill NCI	\$2.2 - \$3.0 mill NCI	\$2.2 - \$3.0 mill NCI
At least 7 R01 equivalent projects (cancer relevant)	At least 7 R01 equivalent projects (cancer relevant)	At least 7 R01 equivalent projects (cancer relevant)
5 different PIs / Investigators	5 different PIs / Investigators	5 different PIs / Investigators
09/2019 \$2.6 mil UC PIs NIHR \$3.5 mil CCHMC	09/2019 \$0.0 mil UC PIs NIHR \$0.6 mil CCHMC	09/2019 \$0.0 mil UC PIs NIHR \$0.0 mil CCHMC

UC Grants & Contracts – DT 2

1) NCI Peer-Reviewed (Need \$10 million) **\$2,656,472 (10/2019)**

2) NIH Peer-Reviewed \$3,323,939

3) Other Peer Reviewed \$782,000

SUBTOTAL PEER-REVIEWED **\$6,762.411 (estimate)**

4) Industry Non-Peer-Reviewed TBD

5) Other Non-Peer-Reviewed TBD

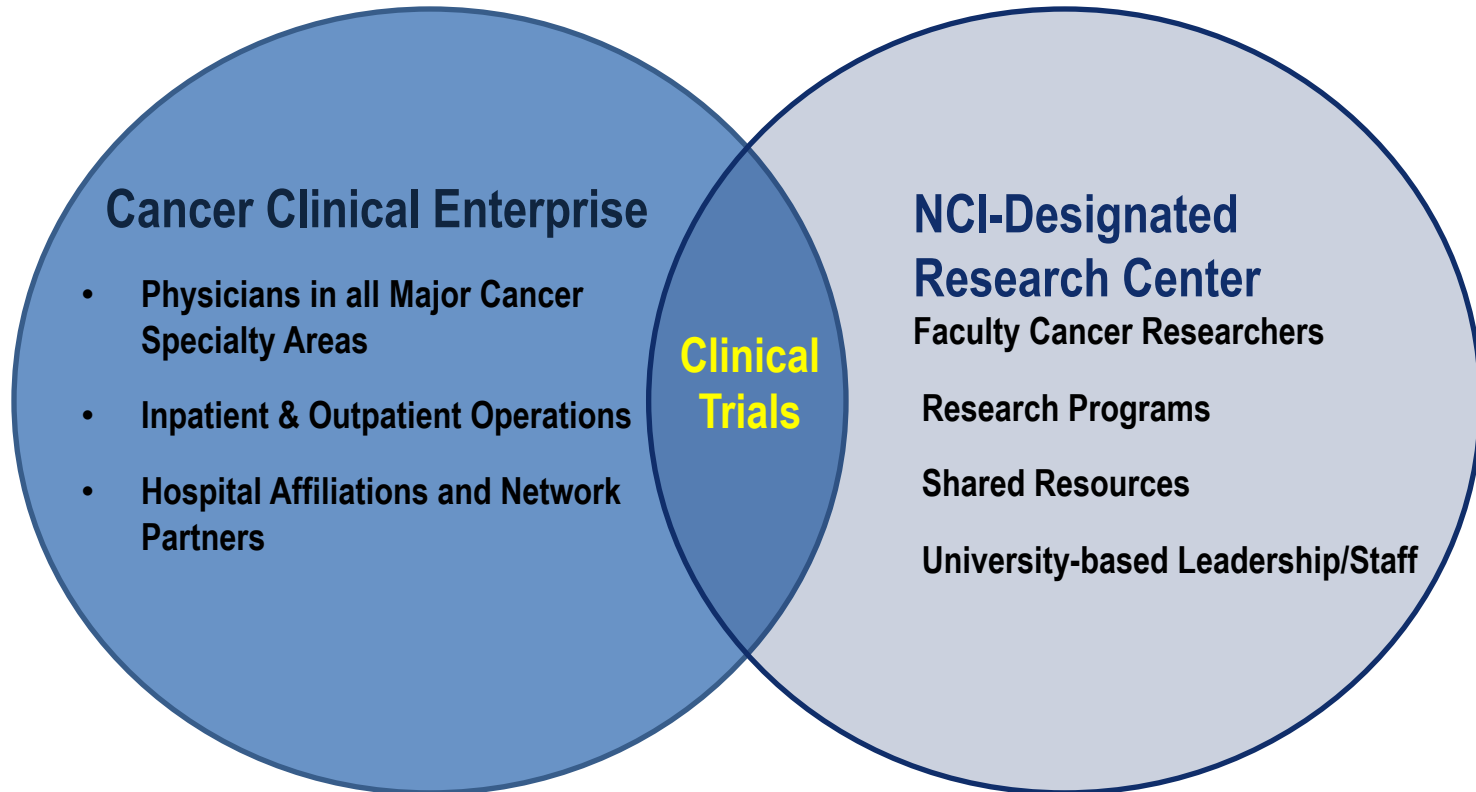
SUBTOTAL NON-PEER-REVIEWED TBD

GRAND TOTAL TBD

Misconceptions regarding NCI Designation

- This can be done in 1-2 years??
- Pursuing an “application”
- NCI designation is an assessment of the quality of patient care??

Relationship between Patient Care and Research



NCI-designation is not earned from quality, volume, and breadth of cancer patient care

Opportunities to Contribute to NCI Designation Efforts

- Community Outreach and Engagement
- Cancer Prevention, Control and Population Sciences
- Initiatives that meet the needs of our Catchment Area

URBAN IMPACT

INNOVATION AGENDA

Opportunities to Contribute to NCI Designation Efforts

- Partnering of UC basic scientists, engineers, physicist, etc. with clinicians/providers from the Academic Health Center (AHC) for translational research projects
- Training and education of the next generation of cancer researchers, clinicians and healthcare practitioners. Advise us of resources
- Developing shared resources (cores) with cancer focus. Leverage capabilities of existing groups/cores

Opportunities to Contribute to NCI Designation Efforts

- Communicate opportunities to the CCC Administrative core team. Help us make connections. Share news and updates.
- Support faculty retention and recruitment
- Develop administrative systems and reporting that aid tracking cancer related activities across multiple colleges and departments.

Bob the Builder....and Wendy too!



**Can we
build it?**

**Yes we
can!**